



*You Stay
Classy
San Diego*

2022 Instructions

The Bandits have temporarily moved to San Diego for the 2022 season while they anticipate the completion of a brand new stadium complex in Las Vegas. Management has brought in San Diego icon Ron Burgandy as the on-field Manager to lead this team along with the rest of his news team as they look to challenge for a playoff spot in the PCL Central Division.

Going into the Annual Auction the Bandits had the least amount of money which was over \$20 below the next closest PCL competitor. A tall hill to climb in order to be competitive in 2022. That said they managed to fill some key holes in the lineup and their pitching, and though they may not be a favorite to win the division, they will win their share of games and hopefully contest for a playoff spot.

Key to winning is to keep close contact. The starters can often go somewhat deep in games but that will not be the determining factor to go to the pen. The Bandits need to keep it close so they might get a fortunate dice roll or two late to pull it out. If I use the word “patience” in the pitching instruction, it is relative to where we are in the game.

Manager Ron Burgandy’s Starting Line-ups

Lineup 1 Standard vs Left		Lineup 2 Alternate vs Left		Lineup 3 Standard vs Right		Lineup 4 vs Right		Lineup 5 vs Right	
8	Taylor	7	Gamel	7	Gamel	2	Realmuto	7	Gamel
2	Realmuto	4	Altuve	2	Realmuto	4	Altuve	2	Realmuto
3	Goldschmidt	3	Goldschmidt	3	Goldschmidt	9	Winker	3	Goldschmidt
9	Reyes	9	Taylor	9	Winker	3	Goldschmidt	9	Winker
4	Altuve	5	Urias	4	Altuve	7	Reyes	4	Altuve
5	Urias	8	Duggar	5	Urias / Sosa	6	Farmer	8	Happ
6	Farmer	6	Farmer	8	Duggar	5	Urias / Sosa	5	Urias
7	Gamel	2	Realmuto	6	Farmer	8	Duggar / Taylor	6	Farmer
Most Lefties		Other Lefties: Rogers, C. Smith, and Ray.		Most Righties		Other Righties: Quantril, Greinke, Glasnow, Anderson, Flexen, Flaherty, Paddack, J. Gray, Mahle, Pivetta, Eflin and Morton.		All Righties not listed in lineup 4 at BAG, SCT and UTP.	

Lineup Notes:

#3 & 4 – Sosa starts where Righty diamonds are 5 or less, **Urias** everywhere else.
Also #4 – Taylor starts for **Duggar** for these pitchers at AGN, CDS, PHB, and SCT.

Bench Coach Brian Fantana’s Comments on Player Usage:

- Do not remove **Altuve, Goldschmidt, or Realmuto**.
- Rarely remove **Winker, Gamel** or **Farmer** (probably only to pinch hit for them late in the game, losing, and the Pinch Hitter has a better chance using COMPARE).
- **Duggar** comes out when we are blown out – early or late. He has 268 AB’s. **Happ** will start for him in a few home games as well as selected away series so do not get too conservative. Just try to save an AB or two where you can. He generally stays in against the lefty reliever unless we are blown out. I want to keep his defense in the game as long as possible while we have a shot to win.
- When **Happ** or **Taylor** starts in CF, they are replaced by **Duggar** after we bat in the 7th if tied or leading.

- **Reyes** is a 5e9 in RF so we are going to want to get him out of games that are tied or where we have a lead after he bats somewhere in the 6th or 7th at the latest. In smaller parks he is a threat against the righty so not an automatic pinch-hit decision if we are behind in the game, especially in a close game or trailing.
- **Winker** is the big lefty bat in the middle of the lineup. He stays in prior to the 7th against the lefty reliever unless it is a clutch situation in a close game. I will defer to your judgment on where we are at in the game and series if you need to go for it at that point. In the 6th and after, with runners on **Taylor** pinch-hits and will go to right field defensively. If you need the lefty bat in that spot after that use **Happ**.
- If **Lefty Starter** comes out, there is not much to do. Get Reyes out immediately for Duggar (Duggar to CF) if tied or within a run or two, otherwise use Winker if trailing by more than 2 runs. Stay with Taylor until after the 6th inning and only pull if trailing late.
- If **Righty Starter** comes out for a lefty, be patient until 7th with changes other than Winker (see Player Usage above) until late in the game. No other changes as it impacts defense until we get in the 8th or 9th, when if trailing look for the best matchup as needed.

PLEASE NOTE: Julio Urias is a pitcher and Luis Urias plays 3B. Likewise Alex Reyes is a pitcher, while Franmil Reyes resides in the outfield (he does not really “play” the position).

Position by Position:

C	Realmuto starts all games and would only come out if injured. Stassi is the injury backup.
1B	Goldschmidt starts them all and never comes out. Realmuto is the injury backup. Farmer can be in injury backup against the lefty starter (Sosa to SS).
2B	Altuve starts them all and never comes out. Urias or Sosa will be the injury backup.
SS	Farmer starts them all and rarely comes out. Sosa is the injury backup. Trailing in the late innings you can use COMPARE for better options to pinch-hit, otherwise he stays in.
3B	Depending on the ballpark Urias and Sosa share the duties and back each other up in injury situations. This is also a candidate for double-switch opportunities late in the game.
OF	A bit of a complicated mess. Winker and Reyes are the RF platoon, but where Winker can come in when the lefty starter leaves, Reyes is only a pinch-hitter if he does not start. Duggar and Taylor (and occasionally Happ) form a CF platoon. Gamel starts most games in LF and rarely comes out unless it is late, trailing, and a better option is shown using COMPARE.

Double switches: I like double-switches where it can provide an advantage to our pitching situation. It also helps against lefty starters where we have a lack of depth on the bench. All that said, those opportunities are pretty limited and would not consider it before the 6th or 7th inning. The positions to consider are at third base (Urias / Sosa); or in the corner outfield positions.

Third Base Coach Champ Kind’s In-Game Strategies

Pitcher hitting / Pinch hitting

- Pitchers sacrifice, even with two strikes.
- PH versus lefty: Sosa or Duggar; Reyes if he didn’t start,
- PH versus righty: Reyes, Happ or Stassi for beef; Sosa or Urias to start the rally.
- **Bunters:** Urias (the pitcher) and Castillo are the A bunters. They are the “pinch squeeze” candidates in close games. Altuve is a B bunter for the squeeze (never sacrifices), but use lightly as I would usually swing away with him. It is a Manager’s decision...

Baserunning

- Typical stealing decisions, 65%, but not with a runner at third. There is some hidden speed here – Duggar, Taylor, Sosa, Happ Realmuto and Goldschmidt can all steal a base.
- Pinch running is usually the pitchers: Castillo (13) and Weaver (13), or one of the above if you need a steal.
- Who to **H&R** and when: Not often, but an option with Franmil Reyes and Goldschmidt at first.
- Score at 60%, or 40% with two outs.
- Send trailers to second aggressively, to third conservatively.
- Send low percentage trailer when tying or go ahead run is coming to the plate at 70% or less.

Defense

- **Throwing Defense:** Use the chart below to guide you. Override to throw home on the winning run in the 9th. This chart should keep the double play in order more often, at least that is the intent.

Two Outs Throwing				Less Than Two Outs Throwing			
Play at	... on a	Throw if	cut if trailer	Play at	... on a	Throw if	cut if trailer
Home	Single	<70%	<40%	Home	Single	<60%	<40%
Home	Double	<75%	<40%	Home	Double	<70%	<40%
Third	Single	<85%	< lead runner	Third	Single	<70%	<40%

The chart below shows you best defenses. Try to keep Duggar in the game for late defense where you can.

C	1B	2B	SS	3B	LF	CF	RF
Realmuto	Goldschmidt	Altuve	Farmer	Sosa	Gamel	Duggar	Taylor
Stassi	Realmuto	Sosa	Sosa	Urias	Happ	Taylor	Happ
	Farmer					Happ	Winker

Intentional Walks

- The mega-boppers when men on and 1B open, or empty bases late and tied. Otherwise, I don't use it much except to get to a bad hitting pitcher or a weak clutch hitter.



Look for the new “The Casino Stadium” to debut in Las Vegas in 2023!

Pitching Coach Brick Tamland's Starting Pitching Rotation

	Away Games LOOK HERE		
Opp.	Game #1	Game #2	Game #3
BAG	Walker	Castillo	Darvish
PBC	Urais	Castillo	Darvish
SBM	Walker	Castillo	Darvish
SCT	Urais	Castillo	Darvish
CDS	Urais	Castillo	Darvish
PHB	Urais	Castillo	Darvish
UTP	Walker	Castillo	Darvish
AGN	Urais	Castillo	Darvish
CHI	Walker	Castillo	Darvish
STL	Urais	Castillo	Darvish
VBS	Walker	Castillo	Darvish

	Home at San Diego		
Opp.	Game #1	Game #2	Game #3
BAG	Urais	Walker	Weaver
PBC	Urais	Walker	Weaver
SBM	Urais	Walker	Weaver
SCT	Urais	Darvish	Walker
CDS	Urais	Darvish	Weaver
PHB	Urais	Darvish	Weaver
UTP	Walker	Castillo	Weaver
AGN	Urais	Castillo	Walker
CHI	Walker	Castillo	Weaver
STL	Urais	Walker	Weaver
VBS	Urais	Walker	Weaver

Divisional Games – ROAD GAMES				
Opp.	Game #1	Game #2	Game #3	Game #4
CDS	Urais	Castillo	Darvish	Walker
PHB	Urais	Castillo	Darvish	Walker
UTP	Urais	Castillo	Darvish	Walker

Divisional Games – HOME GAMES				
Opp.	Game #1	Game #2	Game #3	Game #4
CDS	Urais	Castillo	Darvish	Walker
PHB	Urais	Castillo	Darvish	Walker
UTP	Walker	Castillo	Darvish	Weaver

Urais-20, Castillo-20, Darvish-20, Walker-20, Weaver-10

The Starters

I am throwing my best pitchers at you in your park. Even so the bullpen is strong enough that we do not have to live and die by the starters going deep. Ideally we get 6 innings, and sometimes 7 out of them, but the important thing is to keep the game close. The key innings for the starters is innings 5 and 6. We are trying to avoid the big inning so it is a quicker hook with two runners on than empty bases. I do not want to be down 4+ runs going into the 7th inning.

Urais 20 starts	He is an Ace starter even if he is left-handed. Should be able to go deep often. Hit for him if behind and there are men on base in the 7 th or 8 th . Hit for him if the game is tied or a save situation in the 9 th . Pull him from the mound if tired or if he is facing a lefty masher in close games in the 7 th , 8 th or 9 th .
Castillo 20 starts	Important piece that goes in Game 2 of all road series. If your mashers get to him early you can still let him go 4 or 5 innings if not tired. Tired prior to the 5 th it is batter by batter and he stays in as long as we are within 3 runs or less. Once runners get on he is out. Always out in dots after the 5 th . Never pitches the 9 th unless a big lead. Pull him from the mound in the 7 th or later of a close game and 2 of the next three batters are lefties.
Darvish 20 starts	Always pitches in the last game of the 3-game sets, and only because of the HR issues otherwise it is a real good card which is balanced. Always out when tired. Pitches to the tying run in the 7 th if diamonds are 7 or less for the batter. Pull him after the 6 th if trailing or leads of 2 runs or less in a small parks (diamonds great than 7).
Walker 20 starts	A bit of a screw-balling righty that is a little homer prone against the right hand hitter. Rarely pitches in the 7 th inning in small parks unless there is a big lead (see Darvish), so hit for him in the 7 th or with two on in the 6 th . Always out in dots.
Weaver 10 starts	Not your problem. He only pitches at home and will be starting the last game of the series when he pitches. He will be limited to 7 innings max, per outing, but it is doubtful he will see that very many times.
Additional comments:	No innings limitations on the starters.

The Bullpen

Of course they are **almost** all righties, but – to Gordon’s chagrin – we added a **lefty** and a closer quality card in Jake McGee to round out the righty killing bullpen. We will see if he is still there in 2023 but for now...

In most cases you will select a reliever based on the 2 of 3 concept. We should get a lot of innings out of the starters so hopefully each reliever will be a short stint in the later innings, and the longer relief guys will be identified per the chart below. The setup guys are balanced so not much of a choice, and the closers are short inning guys so they are reserved for the 9th inning only – rare exceptions to close out the last out of the 8th.

Antone	34 IP	Closer. Pitches the 9 th in all (and only) save situations. Can record last out in 8 th and pitch 9 th (4-out save) where he was not used in Game 1.
Sheffield	29 IP	Stopper and Alt Closer. Such limited innings he is only used in the 7 th or 8 th to stop the rally or in the 9 th to get the save when Antone is unavailable. Never starts an inning.
Wisler	49 IP	Setup. Solid and balanced. Pitches only in innings 7 or 8.
Sims	47 IP	Setup. Solid and less balanced. Just need to be a little careful where diamonds are high for the lefty hitter. Otherwise the setup guys are interchangeable.
McGee	60 IP	Middle versus all lineups but care in small parks for righty hitters. Pitches anywhere in innings 5-7 and can go for 2-inning stints. Avoid 7 th inning outings against righty hitters in parks with diamonds greater than 5.
Rodriguez	64 IP	Middle versus all lineups but care in small parks for lefty hitters. Pitches anywhere in innings 5-7 and can go for 2-inning stints. Avoid 7 th inning outings against lefty hitters in parks with diamonds greater than 5.
Reyes	72 IP	Mop up or Middle versus righty based lineups. Pitches early relief (prior to the 5 th) and/or anytime we need long innings – innings 3 through 7. If he has to come in early, let him go a while and eat some innings. That is what he is there for.
Additional comments:		Veronica Corningstone says “No Starter takes one for the team. Use the pen.”

Early Exit Chart

How we envision using the bullpen. Basically your guide on the “flow” of the game **once the starters are out** and it is still a game. This is not how I want you to use the starters! The preference of course is starters are completing 6 innings and are into the 7th. This chart tells you what we can do if we are off that plan.

Starter	Prior to 5th	5th and 6th	7th	8th	9th - Closer
Urias	Reyes	Rodriguez Reyes if down by 5 or more runs	Wisler or Sims; McGee if 2 out of next 3 are lefty	Wisler or Sims; Sheffield to get out of a jam	Antone
Castillo	Reyes	McGee Reyes if down by 5 or more runs	Wisler or Sims; McGee if 2 out of next 3 are lefty	Wisler or Sims; Sheffield to get out of a jam	Antone
Darvish	Reyes	McGee Reyes if down by 5 or more runs	Wisler or Sims; McGee if 2 out of next 3 are lefty	Wisler or Sims; Sheffield to get out of a jam	Antone
Walker	Reyes	Rodriguez Reyes if down by 5 or more runs	Wisler or Sims; McGee if 2 out of next 3 are lefty	Wisler or Sims; Sheffield to get out of a jam	Antone



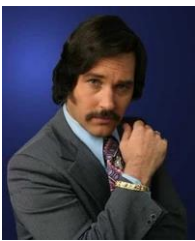
Manager, Ron Burgandy



Third Base Coach, Champ Kind



Club President, Ed Harken



Bench Coach, Brian Fantana



Clubhouse Ops, Garth Holiday



Pitching Coach, Brick Tamland



Veronica Corningstone